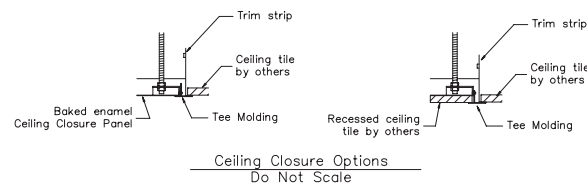
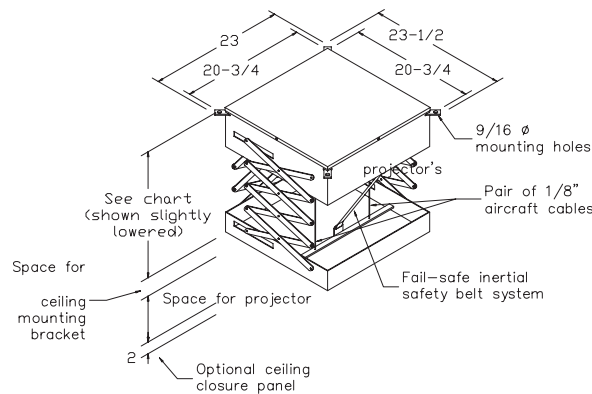


Scissor Lift – SL Series Dimensions & Data	Model SL4	Model SL5	Model SL6	Model SL7	Model SL8	Model SL9	Model SL10	
Retracted height of lift*	8-1/8"	9-1/8"	10-1/8"	11-1/8"	12-1/8"	13-1/8"	14-1/8"	Retracted height of lift*
Overall dimensions (H x W)**	23" x 23-1/2"	23" x 23-1/2"	23" x 23-1/2"	23" x 23-1/2"	23" x 23-1/2"	23" x 23-1/2"	23" x 23-1/2"	Overall dimensions (H x W)**
Max. down travel (Service position)	4'	5'	6'	7'	8'	9'	10'	Max. down travel (Service position)
Approx. travel time to service pos.	36 sec.	45 sec.	54 sec.	63 sec.	72 sec.	81 sec.	90 sec.	Approx. travel time to service pos.
Capacity (lbs)	350	350	350	350	350	350	350	Capacity (lbs)
Net weight (lbs)	120	125	130	135	140	145	150	Net weight (lbs)
Shipping weight (lbs)	146	151	156	161	166	171	176	Shipping weight (lbs)
Amperes***	2.6	2.6	2.6	2.6	2.6	2.6	2.6	Amperes***

Show Position – Set at factory. Can be specified at time of order.  
 Max. projector size (HxW) – Virtually unlimited. However, if using optional ceiling closure, see chart below.  
 Max. projector height – If recessed, limited only by amount of available space above the ceiling.  
 Min. clear space above finished ceiling – Will vary according to height of projector, optional mounting bracket, optional ceiling closure, optional plenum housing.  
 Ceiling opening (+5/16", -0") – Varies with projector. If using optional closure, see chart below.  
 Optional ceiling closure – See chart below.  
 Optional ceiling mounting bracket – SMS Low Profile Bracket and Aero Universal Projector Bracket.  
 Optional plenum housing – Dims vary according to choice of projector.

\* Only height of Scissor Lift in closed position. Overall height of equipment above the ceiling will increase with projector and any optional equipment such as mounting bracket, ceiling closure and plenum housing.  
 \*\* Length includes the 1/2" cable carrier of the Cable Management System.  
 \*\*\* Does not include any electrical load placed on Scissor Lift's prewired power cable.

Closure Models	Size B	Size S	Size E	Size J	Size G	Size U
Max. projector size WxL	25" x 25"	25-1/2" x 27-1/2"	25-1/2" x 35-1/2"	25-1/2" x 39-1/2"	31-1/2" x 44-1/2"	27-1/2" x 30-1/2"
Ceiling opening WxL (+5/16" -0")	29-7/8" x 29-7/8"	29-1/2" x 32"	29-1/2" x 40"	29-1/2" x 44"	35-7/8" x 49"	36-7/8" x 36-7/8"
Ceiling closure WxL (Trim Mold edge-to-edge)	30-5/16" x 30-5/16"	30" x 32-1/2"	30" x 40-5/8"	30" x 44-1/2"	36" x 49-1/2"	37-3/8" x 37-3/8"



# DRAPER

## Scissor Lifts – SL Series

DRAPER, Inc., 411 S. Pearl Street, Spiceland, Indiana 47385  
 EMAIL drapercontract@draperinc.com, PH 765-987-7999, FAX 866-637-5611